

Thundersley Primary School - Creative Topic Parameters

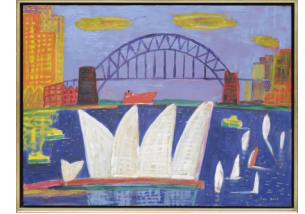
LO: I can create a piece of art that uses techniques learned from real artists.

Art & Design - 2D

Colour

Year 3

Autumn



The Journey

Possible Sketch Book Study Focuses

- Perspective of geometric 3D shapes
- Imaginative use of colour
- Observation of form and basic shape
- Using oil pastels to create different textures
- (see: <https://www.bbc.co.uk/education/clips/zjyr87h> for ideas)
- <https://www.bbc.co.uk/bitesize/clips/zjyr87h>

How can I make landmarks look 3D?



A Good Example:

Sketch of Tower Bridge by Ken Done (super-imposed onto blurred photograph of London)

Key Vocabulary

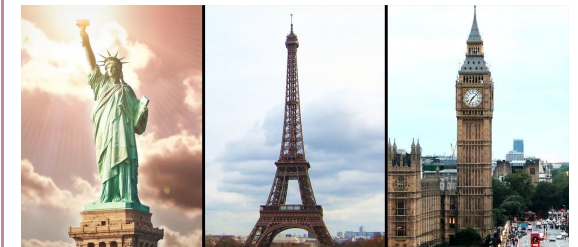
To be able to understand the meaning of..

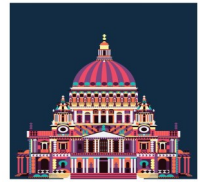
- * Landmark
- * 3D
- * Shade
- * Tone
- * Imposed
- * Geometric
- * Perspective



The Final Piece

Outcome	Success criteria
A picture of a UK landmark in oil pastels (super-imposed onto a blurred photograph)	<ul style="list-style-type: none"> • Must not be a copy of the example • Must be a UK landmark • Must show an imaginative use of colour • Must show a 3D perspective • Must create texture (e.g. water/stone/brick)





The Journey

Possible Sketch Book Study Focuses

- Exploration of shades of blue and green
- Exploration of patterns with geometric shapes
- Sketching of rural landscapes
- Exploration of lines to create background, middle ground and foreground



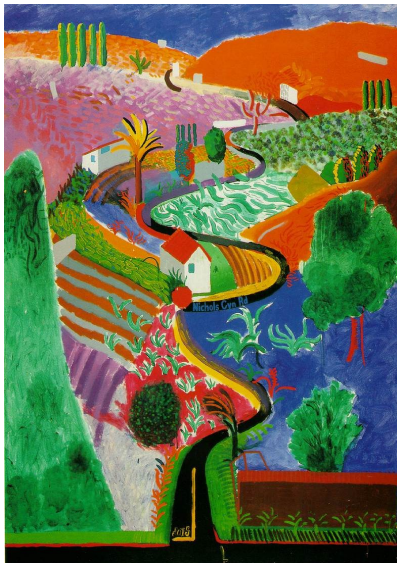
A Good Example:

DAVID HOCKNEY (b. 1937)
The Road Across The Wolds, 1997 (oil on canvas)

Key Vocabulary

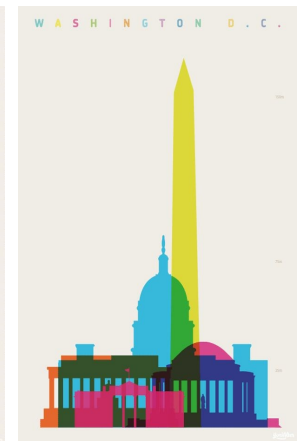
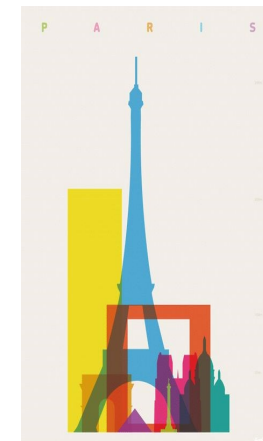
To be able to understand the meaning of...

- * Complementary colours
- * Continuous
- * Symmetrical
- * Repetition
- * Overlapping
- * Tessellation
- * Stencilling
- * Printing



The Final Piece

Outcome	Success criteria
A urban area landscape with perspective, using patterns within geometric shapes	<ul style="list-style-type: none"> • Must not be a copy of the example • Must include curving road/river • Must include geometric shapes (e.g. fields) • Must include patterns within geometric shapes • Must include shades of blue in background and shades of green in mid to foreground • Must include hills





Thundersley Primary School - Creative Topic Parameters

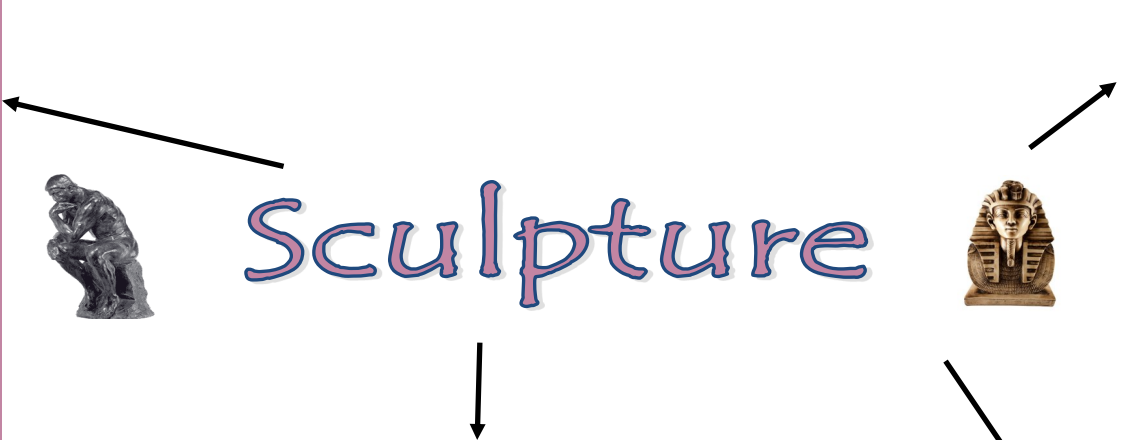
Art & Design - 3D

All Year Groups

Summer



- Skills**
- Time should be invested in practising using tools and techniques, e.g.:
 - ⇒ Rolling
 - ⇒ Cutting
 - ⇒ Scoring
 - ⇒ Smoothing
 - ⇒ Joining
 - ⇒ Carving



- Design and Process**
- Design through making (dont assume that 3D work can be envisioned in 2D)
 - Use of iPads to take photos



Types of sculpture	Examples
<ul style="list-style-type: none"> • Additive • (Additive sculpture is a sculpture that is created by adding or attaching media on to the sculpture.) 	<ul style="list-style-type: none"> • Wire and foil • Pipe cleaners and tissue paper • Natural sculptures (flowers, stones etc)
<ul style="list-style-type: none"> • Kinetic • (Kinetic art is art from any medium that contains movement) 	<ul style="list-style-type: none"> • Moving sculptures (mobiles)
<ul style="list-style-type: none"> • Subtractive • (Subtractive sculpture is the oldest form of sculpture and involves removing material, as in wood carving or stone sculpture, to create a finished work). 	<ul style="list-style-type: none"> • Clay • Bars of soap

Theme Menu

Music	Animal	Loss
Compassion	Growing up	The beauty
School	Fairy tales	Dreams

