

# Thundersley Primary School - Knowledge Organiser for children Year 6

History Topic: a non-European society that provides contrasts with British history

## Mayans Compare to the Anglo Saxons

The Maya and the Anglo Saxons lived at a similar period of time but their lives were very different.

The Mayas built amazing cities.

### Chronology

Maya-The civilization was at its peak from 250 AD to 900 AD in Mexico and part of Central America.

Anglo-Saxons-Settled in Britain from around 400 AD to 1066 AD.

What similarities and differences are there between the artefacts? Draw some historical conclusions and make comparisons

### ENQUIRY and INTERPRETATION

religious buildings, games, writing, stories, gods, rulers

#### MAYA



Pyramid at Chichen Itza



Ball-players



Glyphs carved on a monument



Creation story of Popol Vuh



Two kings dressed as the Hero Twins who became the sun and moon

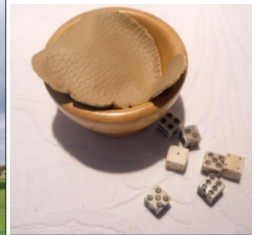


There were several rulers, this is Bird Jaguar VI on the right and his queen on the left.

#### ANGLO-SAXON



Church, Bradwell-on-Sea



Bone dice



Runes and images, Franks Casket



Beowulf



Spear-dancers with helmets with birds on, representing the god Woden, from the Sutton Hoo helmet. Eventually people adopted Christianity.



Harold is crowned King of England on 6th January 1066